

Register online @ [www.phlebologycolorado.com](http://www.phlebologycolorado.com)

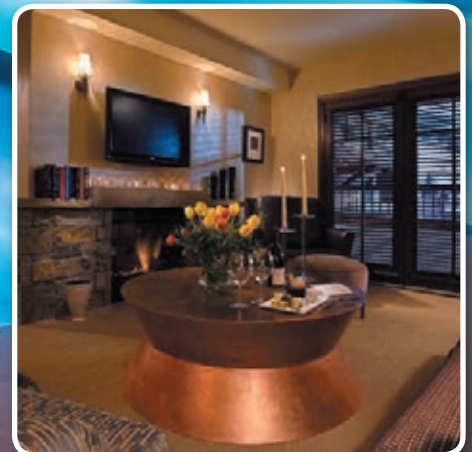
# PHLEBOLOGY *Colorado* 2017

**8<sup>th</sup> Annual Meeting**

26-28 January 2017

PROGRAM DIRECTOR  
**Paul McNeill, MD**

PROGRAM CO-DIRECTOR  
**James Ingram, MD**





# Invitation To Attend

Dear Colleagues

We hope that 2016 has been a healthy and productive year thus far. It is time to gear up for Colorado Phlebology 2017.

Once again we will get together in Telluride to share our love of the mountains, our passion for our work and our need to collaborate on the problems and challenges of modern phlebology. John's Kingsley's vision of a free flowing exchange of ideas, a robust debate, a transparent review of difficulties we encounter in our work along with our close association with key industry sponsors set Colorado Phlebology apart from other medical meetings.

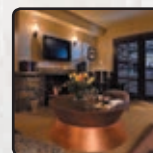
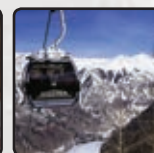
We want Colorado Phlebology to continue to serve its attendees and sponsors. Our collective participation makes Colorado Phlebology what it is and what it can become as we carry on the vision of our dear friend John.

Jim Ingram, myself and Leon Olsen are making preparations for the January 2017 meeting. It will be a good meeting once again and will certainly afford us time to renew our friendships. Reports of an el Nino may bode well for skiing conditions!

Warmest Regards,

**Paul M. McNeill, MD (Director)**

**James Ingram, MD (Co-Director)**





*"Many like myself are in the trenches every day, not in the University setting where "research" and "cerebral" activities are rewarded. We get our rewards from the good results our patients enjoy. Sharing that information is also a good reward."*

*Participation, discussion, helping one another resolve issues and problems, the sessions brought out the true spirit of medicine in the purest sense.*

*This is the only conference held where attendees can freely discuss problems, complications, difficult situations, tricks, ideas, etc. without fear for reprisal, and usually with an "attaboy" response, keep trying.*

*Each year of the past three meetings, every attendee leaves with more "pearls for the trade" than any other meeting by personal reports. Plus we just flat have fun, no other way to explain this unique time together.*

*Cases may be "I am a hero and did a great job, this is how I did so good", of more often "I screwed this one up, why and what might I have done, and how do I prevent such in the future".*

*Cements further our special relationships and allows us a further reason to share and to continue our close and unusual relationships with this meeting. I too think we have a special organization and something very unique in medicine.*

*The comraderie is terrific, and the information shared is priceless.*

*This is my favorite ski resort and get-away spot in the U.S.*

## *Experience Telluride*

*Telluride is best known for its world-class ski resort, which boasts 1,700 acres of terrain and three air gardens and terrain parks.*

*Telluride's slopes and lifts remain uncrowded throughout the season - in fact, the mountain is so uncrowded that you'll often feel like you are on your own private ski slope.*

*The Telluride ski experience offers a genuine mountain experience for all levels of skiers thanks to a mix of quality terrain at all points on the mountain. From refined groomed runs to challenging moguls, there truly is something for everyone. Even beginners and intermediate skiers can ride to the highest peaks and enjoy terrain and views typically reserved for the experts. Find out why Telluride has been called, "The most beautiful place you'll ever ski."*

*Telluride is known for its world-class skiing and snowboarding, but that's not all there is to do here. Whether you're a non-skier or you are taking a day off from the slopes there is plenty to keep you occupied in the San Juans. From snowshoeing to soaking at the spa to soaring through the sky in a glider, there's something for everyone!*



*John R. Kingsley, MD*



# General Information

## PROGRAM OVERVIEW

Format is completely informal, no topics for presentation other than those proposed by the sponsors for general discussion including case presentations. Each participant is encouraged to render an opinion and advice; attendees will be polled and the microphone passed around the room. Each participant is encouraged to bring a case for presentation and discussion

## ACCOMMODATION

Group discount rates have been negotiated with Madeline Hotel and Residences. As a distinguished favorite among Telluride hotels and resorts, Madeline Hotel provides convenient access to miles of skiing, tennis and children's programs. Relax in our beautifully appointed accommodations - and experience complete rejuvenation of mind, body, and spirit, in an incomparable setting:

- Located amid the 14,000-foot Rocky Mountain peaks towering above the historic town of Telluride
- Steps from over 100 Telluride ski trails.
- Just a gondola ride away from the Town of Telluride

## PROGRAM LOCATION

Located on the scenic San Juan Skyway in the heart of southwest Colorado's San Juan Mountains, Telluride and Mountain Village are 67 miles south of Montrose, 127 miles south of Grand Junction, 125 miles northwest of Durango, 7 hours from Denver, 8 from Phoenix and 6 from Albuquerque.

Mountain Village is connected to Telluride by a free gondola ride. Located at 9,500 feet above sea level, Mountain Village overlooks some of Colorado's most magnificent peaks. The year round alpine resort was founded in 1987 and hosts the ski resort headquarters, a golf course, restaurants, lodging, shops and other amenities of a thriving community.

## NON SKI ACTIVITY OPTIONS

### Winter Moon Sled Dog Adventures

Tel: 970.729.0058

Email: wintermoondogs@shaw.ca

1 trip a day from 9am-1pm. Travel 10 miles round trip with the dogs and run 2 people per sled plus a guide. Run up to 3 sleds per trip. Each sled runs 8-10 alaskan huskies. Price is \$220- per person. They do not accept credit cards. Checks in advance or cash only on trip day. Advanced reservations are required as they do book up.

### Roudy's Telluride Horseback & Sleigh Ride Adventures

Tel: 970.728.9611

Web: [www.ridewithroudy.com](http://www.ridewithroudy.com)

Located 32miles from Telluride (around 45mins by car).

\$45 for one hour horse riding  
\$85 for two hours horse riding  
\$30 per person for sleigh riding

### Deep Creek Sleigh Rides

Tel: 970.596.5092

### Telluride Snowmobile Adventures

Tel: 970.728.4475

Web: [www.telluridesnowmobile.net](http://www.telluridesnowmobile.net)

Tour	Single	Dbt
Alta Ghost Town Tour (2hrs)	\$149	\$199
Backcountry Tour (All day)	\$299	n/a
Dunton Hot Springs (All day)	\$299*	\$349*

\* Lunch at the Dunton Hot Springs is \$99. Fee includes lunch, access to the natural hot springs, and towels.

## COMMERCIAL FUNDING AND FINANCIAL SUPPORT

The Phlebology 2017 Meeting at Telluride is being funded in part by unrestricted educational grants from various commercial organizations. A complete list of commercial supporters and contributors will be published in the final program.

## CANCELLATION POLICY

Cancellations will be accepted until 30 November 2016. Cancellations MUST be in writing. All cancellations will be processed within four weeks after the meeting. No refund will be given to no-shows.

In the unlikely event that the course is cancelled, the organisers will give a full refund of the fees paid less a \$50 processing fee. However, any travel, hotel or similar costs will not be reimbursed after 30 November 2016.

# Program Schedule

Wednesday 25 January 2017	Thursday 26 January 2017	Friday 27 January 2017	Saturday 28 January 2017
4:00pm-8:00pm	7:00-9:00am	7:00-9:00am	7:00-9:00am
Exhibitors Setup	Free Time	Free Time	Meeting Concludes
	4:00-7:00pm	4:00-7:00pm	Exhibitors Take Down

# Ski Lift Passes And Ski Rental

Ski Lift Passes		
Group Discount Rate	Normal Daily Rate	
2 day discounted ski pass at \$80.00/day (\$160 total)	Normally \$104/day (\$208 total)	
3 day discounted ski pass at \$80/day (\$240 total)	Normally \$104/day (\$312 total)	
All lift tickets need to be ordered at least (14) days in advance and lift ticket pricing is NET.		
Ski Lessons		
Beginner Adventure Lesson \$115 11:15am-3:45pm	Normally \$135 for the 2015/2016 season.	
Full Day Adventure Lesson \$115 11:15am-3:45pm	Normally \$135 for the 2015/2016 season.	
Group discounted ski equipment with Telluride Sports Options are as follows:		
Ski Packages		
Package	Group Discount Rate	Daily Non-Reservation Rate
Demo Ski Package	\$51/day	\$64/day
Demo Skis Only	\$49/day	\$60/day
Alpine Performance Ski Package	\$41/day	\$51/day
Alpine Performance Skis only	\$39/day	\$47/day
Snowboard Packages		
Package	Group Discount Rate	Daily Non-Reservation Rate
Premium Snowboard Package	\$39/day	\$49/day
Premium Snowboard Only	\$36/day	\$45/day



# Map of Telluride Ski Resort



## Hotel Madeline

From spacious guestrooms and suites, to two, three, and four-bedroom residences, Madeline Hotel and Residences offers Telluride accommodations that deliver the utmost in comfort, style and atmosphere. Every living space surrounds you in luxury with sophisticated decor and breathtaking views. The Madeline Residences are ideal vacation rentals in Telluride, offering all the conveniences of home along with the world-class amenities reserved for Residence Owners and hotel guests. When you're staying slopeside, you're at the center of it all.

### Slopeside GUESTROOMS

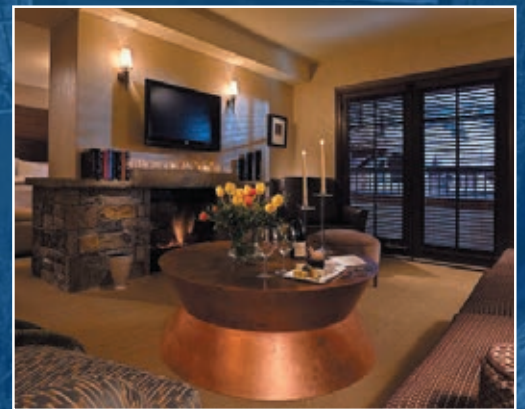
- Views of the Snowcapped Mountains
- Spacious and Cozy Rooms and Suites
- Plush Linens and Pillows
- Large Bathrooms with Soaking Tubs

### Stunning SUITES

- Cozy & Contemporary Hotel Suites Incorporate European Alpine Design
- Luxuriously Appointed Living Rooms
- Granite Double Vanity
- Gas Fireplaces for Added Comfort

### Top Reasons To Stay at Hotel Madeline

Telluride's Only Four-Diamond, Full-Service Hotel, Central Location in the Heart of Mountain Village, Ski-In/Ski-Out Full-Service Ski Valet, Guestrooms and 1-4 Bedroom Residences, Dining, Spa and World-Class Amenities.





# Registration form

## Personal Details

Title: Miss / Mrs / Ms / Mr / Dr / Prof / Assoc Prof

First Name: \_\_\_\_\_ Surname: \_\_\_\_\_

Company / Clinic Name: \_\_\_\_\_

Clinic location: City/Town \_\_\_\_\_

Preferred Contact Address: Street \_\_\_\_\_

Suburb \_\_\_\_\_ Country \_\_\_\_\_

City/Town \_\_\_\_\_ Post Code \_\_\_\_\_

Email: \_\_\_\_\_

Additional Attendees: Title, First Name, Last Name \_\_\_\_\_

Phone Bus: \_\_\_\_\_ Fax: \_\_\_\_\_ Mobile: \_\_\_\_\_

Special requests: (ie dietary requests, disabilities, etc) \_\_\_\_\_

Yes I wish to present a case(s) Title: \_\_\_\_\_

Category \_\_\_\_\_

## A. Registration

Physician Registration (@\$100/person) \_\_\_\_\_ people x \$100 \$ \_\_\_\_\_  
 Spouse Registration (@ No Charge) \_\_\_\_\_ people x \$0 \$ **0.00**  
 Nurse/Staff Registration (@\$50/person) \_\_\_\_\_ people x \$50 \$ \_\_\_\_\_  
 Exhibitor Registration (@ No Charge) \_\_\_\_\_ people x \$0 \$ **0.00**  
**TOTAL REGISTRATION FEE (TOTAL A)** \$ \_\_\_\_\_

## B. Accommodation Available

Arrival Date \_\_\_\_\_ Jan Departure Date \_\_\_\_\_ Jan  
**Hotel Madeline**  
 King Room (1-2 people) \_\_\_\_\_ nights x \$360\* \$ \_\_\_\_\_  
 Double Queen (1-4 people) \_\_\_\_\_ nights x \$405\* \$ \_\_\_\_\_  
 One Bedroom Suite (1-4 people) \_\_\_\_\_ nights x \$620\* \$ \_\_\_\_\_  
\* Rate includes 12.4% tax, resort fee, complimentary parking and 1 continental breakfast per room.  
**TOTAL ACCOMMODATION FEE (TOTAL B\*)** \$ \_\_\_\_\_

## C. Ski Passes

Please tick which consecutive days you require

Tues  Wed  Thurs  Fri  Sat  Sun  Mon   
 Quantity (people) \_\_\_\_\_ x \_\_\_\_\_ days x \$80.00 = \$ \_\_\_\_\_  
 Quantity (people) \_\_\_\_\_ x \_\_\_\_\_ days x \$80.00 = \$ \_\_\_\_\_  
**TOTAL SKI PASSES FEE (TOTAL C)** \$ \_\_\_\_\_

## D. Ski & Snowboard Rental

Height: \_\_\_\_\_ Weight (lbs): \_\_\_\_\_  
 Shoe Size: \_\_\_\_\_ Age: \_\_\_\_\_  
 Helmet Required Yes  No   
 Snowboard Stance: Regular  Goofy   
 Skier Ability: Beginner  Intermediate  Expert   
 Demo Ski Package \_\_\_\_\_ days x \$51 \$ \_\_\_\_\_  
 Demo Skis Only \_\_\_\_\_ days x \$49 \$ \_\_\_\_\_  
 Alpine Performance Ski Package \_\_\_\_\_ days x \$41 \$ \_\_\_\_\_  
 Alpine Performance Skis Only \_\_\_\_\_ days x \$39 \$ \_\_\_\_\_  
 Sport Ski Package \_\_\_\_\_ days x \$34 \$ \_\_\_\_\_  
 Sport Skis Only \_\_\_\_\_ days x \$32 \$ \_\_\_\_\_  
 Snowboard Package \_\_\_\_\_ days x \$39 \$ \_\_\_\_\_  
 Snowboard Only \_\_\_\_\_ days x \$36 \$ \_\_\_\_\_  
**TOTAL RENTAL FEE (TOTAL D)** \$ \_\_\_\_\_

*I agree to assume full responsibility for the use and care of this equipment. I agree to reimburse Telluride Sports for any loss or damage to this equipment other than reasonable wear and tear resulting from use. This damage waiver covers only breakage or damage of equipment included in this order. It does not cover loss or theft or personal injury. Damage will cost \$2 per person per day.*

## Payment Details

**A+B\*+C+D = TOTAL FEES** \$ \_\_\_\_\_

\*Includes State Occupancy Tax of 12.4%

I authorise Conference Matters to charge my Visa/Mastercard as detailed below

Card Number:

Card expiry date \_\_\_\_/\_\_\_\_/\_\_\_\_ Date \_\_\_\_/\_\_\_\_/\_\_\_\_

Print Cardholder's Name \_\_\_\_\_

Cardholder's Signature \_\_\_\_\_

Or Direct Debit (International transfer)

**Account Number:** 26830175USD31 **SWIFT code:** ASBBNZZA  
**Account Name:** Conference Matters (NZ) Ltd **Reference:** PHLEBOLOGY Surname  
**Bank Name:** ASB Bank **Phone:** +64 21 164 3815  
**Bank Address:** Rathbone Street, Whangarei 0140, New Zealand

## How to Register

(Choose your preference)

**Conference Matters**

Phlebiology Colorado 2017 Conference  
 PO Box 1661, Whangarei 0140  
 New Zealand

**Fax:** +64 9 437 4089

**Web:** www.phlebiologycolorado.com

**Email:** leon@conferencematters.co.nz

The Phlebology Colorado Meeting in January 2016 was proudly sponsored by:




**TotalVein™**  
SYSTEMS

*Nobody cares more.  
Nobody costs less.*


**How to Register** (Complete the Registration Form overleaf)

 **Conference Matters**

Phlebology Colorado 2017 Conference  
PO Box 1661, Whangarei 0140  
New Zealand

 **Fax:** +64 9 437 4089

 **Web:** [www.phlebologycolorado.com](http://www.phlebologycolorado.com)

 **Email:** [leon@conferencematters.co.nz](mailto:leon@conferencematters.co.nz)